

AFTER

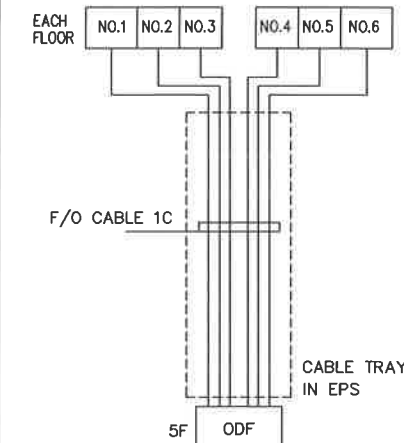
SYMBOL		
SYMBOL	DESCRIPTION	REMARK
MTTB	MAIN TELEPHONE TERMINAL BOX	250P
STTB	SUB TELEPHONE TERMINAL BOX	250P
TTB	TELEPHONE TERMINAL BOX	2F (120P) 3~10F (60P)
MUX	MULTIPLEXER	
▽	TEL (VOICE & DATA) OUTLET	
▽	TEL (VOICE) OUTLET	
GTB	GROUNDING TEST BOX	
⊕	HAND HOLE	
⊕	EARTH ELECTRODE	
F	FIBER BOX(WITH PIGTAIL AND RJ11 JACK)	
ODF	OPTICAL DISTRIBUTION FRAME	WORK SCOPE BY COMMUNICATION SERVICE

CABLE SCHEDULE		
NO.	CABLE SCHEDULE	REMARK
①	UTP CAT5 0.5mm/4P x 1 (CD 25C)	VOICE
②	UTP CAT5 0.5mm/4P x 2 (CD 25C)	DATA & VOICE
③	UTP CAT5 0.5mm/25P (ON TRAY)	
④	UTP CAT5 0.5mm/25P x 2 (ON TRAY)	
⑤	F/O CABLE 4C (CD 32C)	
⑥	F/O CABLE 8C (ON TRAY or PVC 50C)	
⑦	F/O CABLE 1C (CD 25C)	DATA & VOICE
⑧	GV 16mm x 1 (PVC 25C)	GROUND
⑨	F/O CABLE 8C (ELP 40mm)	

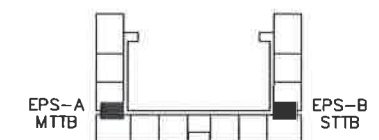
SHOP DRAWING

- 'MO 100B' MEANS MODERN TYPE UNIT
- 'MO 120B' MEANS MODERN TYPE UNIT
- 'MO 140B' MEANS MODERN TYPE UNIT
- 'TYPE R2 AND L1' MEANS THAT ODF IS INSTALLED ON LEFT SIDE IN RESIDENTIAL BUILDING REFER TO BLOCK PLAN DRAWING (E-1003 : TELECOMMUNICATION SYSTEM PLAN)
- "a" UTP CABLE AND COAXIAL CABLE RUN IN ONE CONDUIT
- THE FIBER BOX F/O CABLE OF THE ALL UNIT ARE TO THE ODF
- THE ODF IS WORK SCOPE BY TELECOMMUNICATION SERVICE
- ① THIS MARK IS DELETE DEVICE

NOTE






KEY PLAN

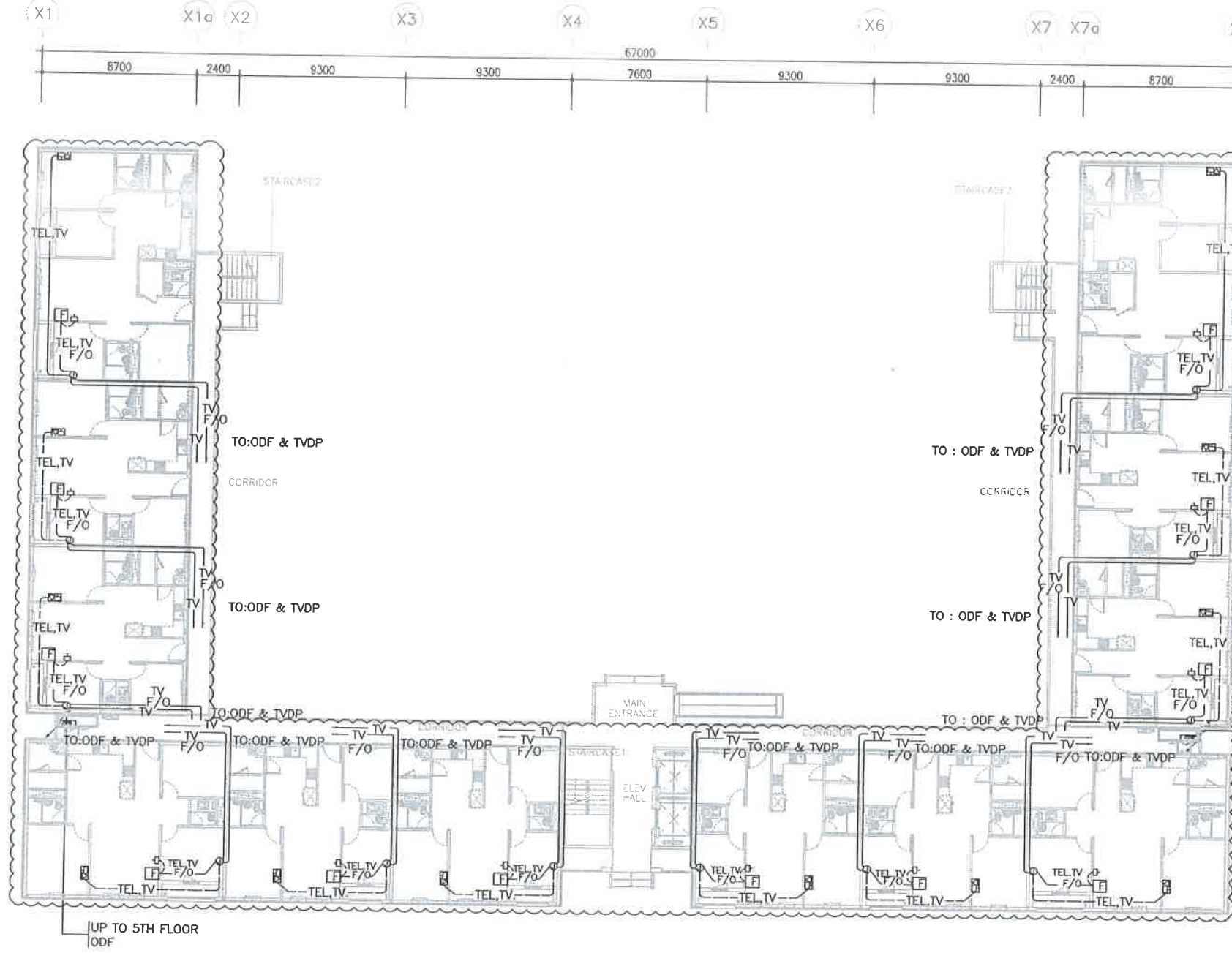


1 TELEPHONE SYSTEM RISER DIAGRAM (TYPE R2, L1)

SCALE NONE

Owner <div> NATIONAL INVESTMENT COMMISSION International Zone, Baghdad, Iraq</div>		PROJECT TITLE <div> BISMAYAH NEW CITY PROJECT NATIONAL HOUSING PROGRAM</div>				DRAWING TITLE TELEPHONE SYSTEM RISER DIAGRAM (TYPE "MO" R2, L1)		
Investor / Contractor <div> HANWHA E&C</div>		DRAWN BY	CHECKED BY	CHECKED BY	APPROVED BY	SCALE	DRAWING NO	REV
		2012	2012	2012	2012	NONE	E - 7002	

AFTER



SYMBOL		
SYMBOL	DESCRIPTION	REMARK
TEL	TEL (VOICE & DATA) OUTLET	
TEL TV	TEL (VOICE) & TV OUTLET	
TV	TV OUTLET	
MTDP	MAIN TELEVISION AMP DISTRIBUTION PANEL	
TVDP	TELEVISION SIGNAL DISTRIBUTION PANEL	
STB	SUB TELEPHONE TERMINAL BOX	
MTB	TELEPHONE TERMINAL BOX	
MUX	MULTIPLEXER	
PB	PULL BOX	
JB	JUNCTION BOX	
HH	HAND HOLE	
GTB	GROUNDING TEST BOX	
EE	EARTH ELECTRODE	
FB	FIBER BOX (WITH PIGTAIL AND RJ11 JACK)	
ODF	OPTICAL DISTRIBUTION FRAME	WORK SCOPE BY COMMUNICATION SERVICE

SHOP DRAWING

1. 'TYPE R1' MEANS THAT ODF & MTB ARE INSTALLED ON RIGHT SIDE IN RESIDENTIAL BUILDING
REFER TO BLOCK PLAN DRAWING (E-1001 : ELECTRICAL POWER SYSTEM PLAN, E-1003 : TELECOMMUNICATION SYSTEM PLAN)

3. ① THIS MARK IS DELETE DEVICE

CABLE SCHEDULE

NO.	DESCRIPTION	
①	F/O CABLE 4C	(CD 32C)
②	F/O CABLE 8C	(ELP 40mm)
③	F/O CABLE 8C	(PVC 50C)
④	REFER TO BLOCK PLAN DRAWING FOR CABLE SCHEDULE	INT. ~ ④
⑤	GV 16mm ² X 1	(PVC 25C)
⑥	COAXIAL CABLE x 2	(CD 32C)
⑦	450/750V Cu/PVC 2.5mm ² x 2, E-2.5mm ²	(CD 20C)

CONDUIT AND WIRING FOR TELEPHONE & TV

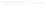


TV	COAXIAL CABLE x 1	(CD 25C)
TV	COAXIAL CABLE x 2	(CD 25C)
TEL, TV	UTP CAT5 4P/0.5mm x 1 COAXIAL CABLE x 1	(CD 25C)
TV, F/O	COAXIAL CABLE x 1 F/O CABLE 1C x 1	(CD 25C)
TEL, TV F/O	UTP CAT5 4P/0.5mm x 1 COAXIAL CABLE x 1 F/O CABLE 1C x 1	(CD 25C)
F/O	F/O CABLE 1C x 1	(CD 25C)

LINE TYPE ACCORDING TO LOCATION OF CONDUIT	
---	EXPOSED CONDUIT
---	EMBEDDED IN H/C SLAB, SOLID SLAB, WALL
---	EMBEDDED IN TOPPING CONCRETE
---	UNDERGROUND

1 1ST FLOOR COMMON AREA TELEPHONE & TV SYSTEM LAYOUT (TYPE R1)

SCALE 1:300

- ONLY APPLY AT A2, A6 AND GROUND FLOOR OF THE A4 BLOCK (MODERN TYPE)

<div>Owner</div> <div><div>NATIONAL INVESTMENT COMMISSION</div><div>International Zone, Baghdad, Iraq</div></div>		<div>PROJECT TITLE</div> <div><div>BISMAYAH NEW CITY PROJECT</div><div>NATIONAL HOUSING PROGRAM</div></div>				<div>DRAWING TITLE</div> <div>1ST FLOOR COMMON AREA</div> <div>TELEPHONE & TV SYSTEM LAYOUT (TYPE R1)</div>		
<div>Investor / Contractor</div> <div><div>HANWHA E&C</div></div>		<div>DRAWN BY</div> <div>2012</div>	<div>CHECKED BY</div> <div>2012</div>	<div>CHECKED BY</div> <div>2012</div>	<div>APPROVED BY</div> <div>2012</div>	<div>SCALE</div> <div>A1 1:150 A3 1:300</div>	<div>DRAWING NO</div> <div>E - 7102</div>	<div>REV</div>

APPROVED
Date 2012