

AFTER

## SHOP DRAWING

1. 'TYPE L1' MEANS THAT ODF & MDB ARE INSTALLED ON LEFT SIDE IN RESIDENTIAL BUILDING  
REFER TO BLOCK PLAN DRAWING (E-1001 : ELECTRICAL POWER SYSTEM PLAN, E-1003 : TELECOMMUNICATION SYSTEM PLAN)

2. THIS MARK IS DELETE DEVICE

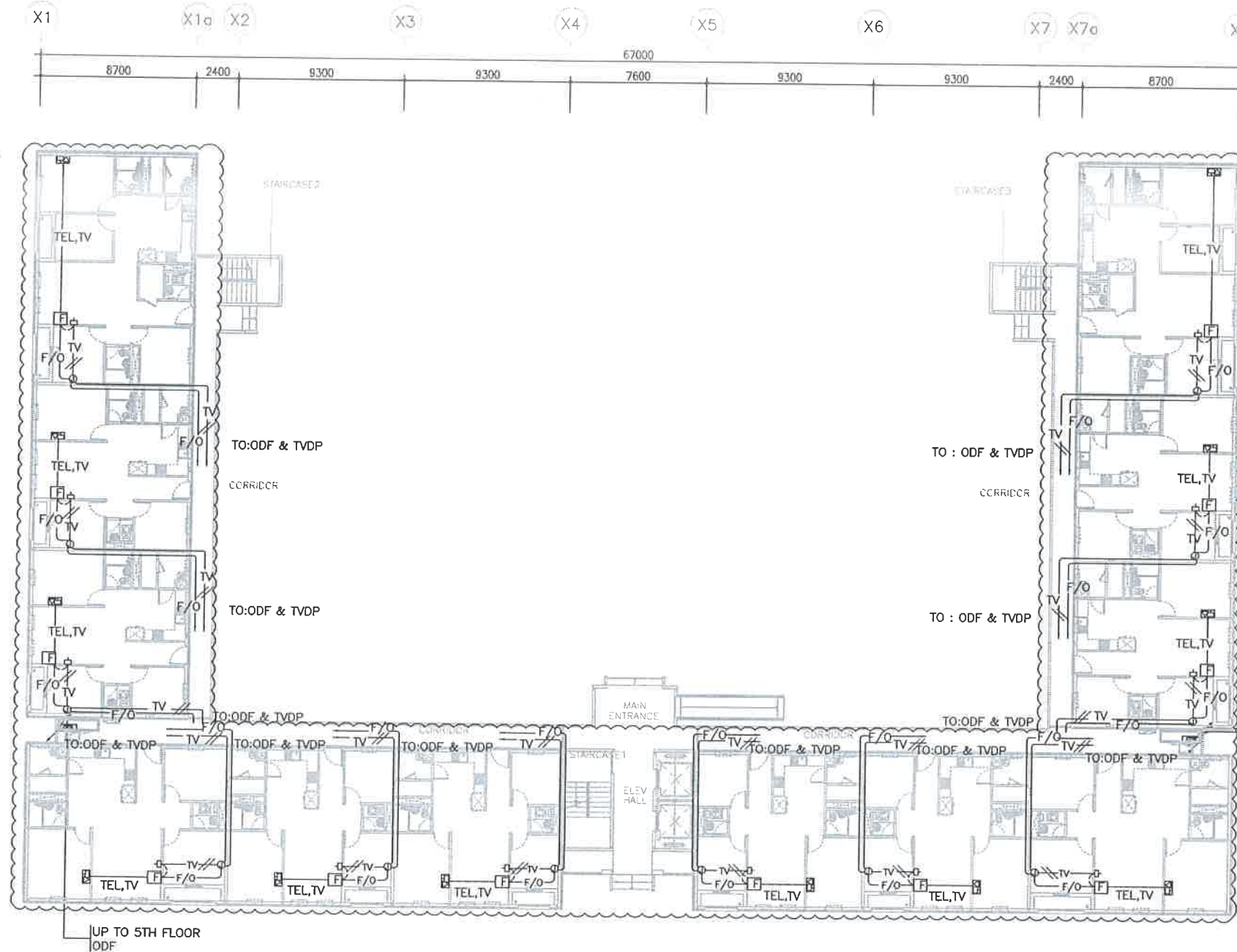
| SYMBOL |  |                                     |
|--------|--|-------------------------------------|
| SYMBOL | DESCRIPTION                            | REMARK                              |
|        | TEL (VOICE & DATA) OUTLET              |                                     |
|        | TEL (VOICE) & TV OUTLET                |                                     |
|        | TV OUTLET                              |                                     |
|        | MAIN TELEVISION AMP DISTRIBUTION PANEL |                                     |
|        | TELEVISION SIGNAL DISTRIBUTION PANEL   |                                     |
|        | SUB TELEPHONE TERMINAL BOX             |                                     |
|        | TELEPHONE TERMINAL BOX                 |                                     |
|        | MULTIPLEXER                            |                                     |
|        | PULL BOX                               |                                     |
|        | JUNCTION BOX                           |                                     |
|        | HAND HOLE                              |                                     |
|        | GROUNDING TEST BOX                     |                                     |
|        | EARTH ELECTRODE                        |                                     |
|        | FIBER BOX(WITH PIGTAIL AND RJ11 JACK)  |                                     |
|        | OPTICAL DISTRIBUTION FRAME             | WORK SCOPE BY COMMUNICATION SERVICE |

| CABLE SCHEDULE |  |            |
|----------------|--|------------|
| NO.            | DESCRIPTION  |            |
| (A)            | F/O CABLE 4C   | (CD 32C)   |
| (1)            | F/O CABLE 8C   | (ELP 40mm) |
| (2)            | F/O CABLE 8C   | (PVC 50C)  |
| (3)            | REFER TO BLOCK PLAN DRAWING FOR CABLE SCHEDULE               | INT. ~ (H) |
| (4)            | GV 16mm <sup>2</sup> X 1                                     | (PVC 25C)  |
| (5)            | COAXIAL CABLE x 2  | (CD 32C)   |
| (6)            | 450/750V Cu/PVC 2.5mm <sup>2</sup> x 2, E-2.5mm <sup>2</sup> | (CD 20C)   |

### CONDUIT AND WIRING FOR TELEPHONE & TV

|               |  |          |
|---------------|--|----------|
| TV            | COAXIAL CABLE x 1  | (CD 25C) |
| TV            | COAXIAL CABLE x 2  | (CD 25C) |
| TEL,TV        | UTP CAT5 4P/0.5mm x 1<br>COAXIAL CABLE x 1                     | (CD 25C) |
| TV,F/O        | COAXIAL CABLE x 1<br>F/O CABLE 1C x 1                          | (CD 25C) |
| TEL,TV<br>F/O | UTP CAT5 4P/0.5mm x 1<br>COAXIAL CABLE x 1<br>F/O CABLE 1C x 1 | (CD 25C) |
| F/O           | F/O CABLE 1C x 1   | (CD 25C) |

| LINE TYPE ACCORDING TO LOCATION OF CONDUIT |  |
|--|--|
| ---  | EXPOSED CONDUIT                        |
| ---  | EMBEDDED IN H/C SLAB, SOLID SLAB, WALL |
| ---  | EMBEDDED IN TOPPING CONCRETE           |
| ---  | UNDERGROUND                            |



### 1 1ST FLOOR COMMON AREA TELEPHONE & TV SYSTEM LAYOUT (TYPE L1)

SCALE 1:300

- ALL BLOCK APPLY EXCLUDE AT A2,A6 AND GROUND FLOOR OF THE A4 BLOCK(MODERN TYPE)

|  |  |  |                    |  |                     |                            |
|--|--|--|--------------------|--|---------------------|----------------------------|
| Owner<br>NATIONAL INVESTMENT COMMISSION<br>International Zone, Baghdad, Iraq |  | PROJECT TITLE<br>BISMAYAH NEW CITY PROJECT<br>NATIONAL HOUSING PROGRAM |                    | DRAWING TITLE<br>1ST FLOOR COMMON AREA<br>TELEPHONE & TV SYSTEM LAYOUT (TYPE L1) |                     |                            |
| Investor / Contractor<br>HANWHA E&C  |  | DRAWN BY<br>2012   | CHECKED BY<br>2012 | CHECKED BY<br>2012   | APPROVED BY<br>2012 | SCALE<br>A1 1:150 A3 1:300 |
|  |  |  |                    |  |                     | DRAWING NO<br>E - 7108     |
|  |  |  |                    |  |                     | REV                        |

