

AFTER

SHOP DRAWING

SYMBOL		
SYMBOL	DESCRIPTION	REMARK
	TEL (VOICE & DATA) OUTLET	
	TEL (VOICE) & TV OUTLET	
	TV OUTLET	
	MAIN TELEVISION AMP DISTRIBUTION PANEL	
	TELEVISION SIGNAL DISTRIBUTION PANEL	
	SUD TELEPHONE TERMINAL BOX	
	TELEPHONE TERMINAL BOX	
	MULTIPLEXER	
	PULL BOX	
	JUNCTION BOX	
	HAND HOLE	
	GROUNDING TEST BOX	
	EARTH ELECTRODE	
	FIBER BOX(WITH PIGTAIL AND RJ11 JACK)	
	OPTICAL DISTRIBUTION FRAME	WORK SCOPE BY COMMUNICATION SERVICE

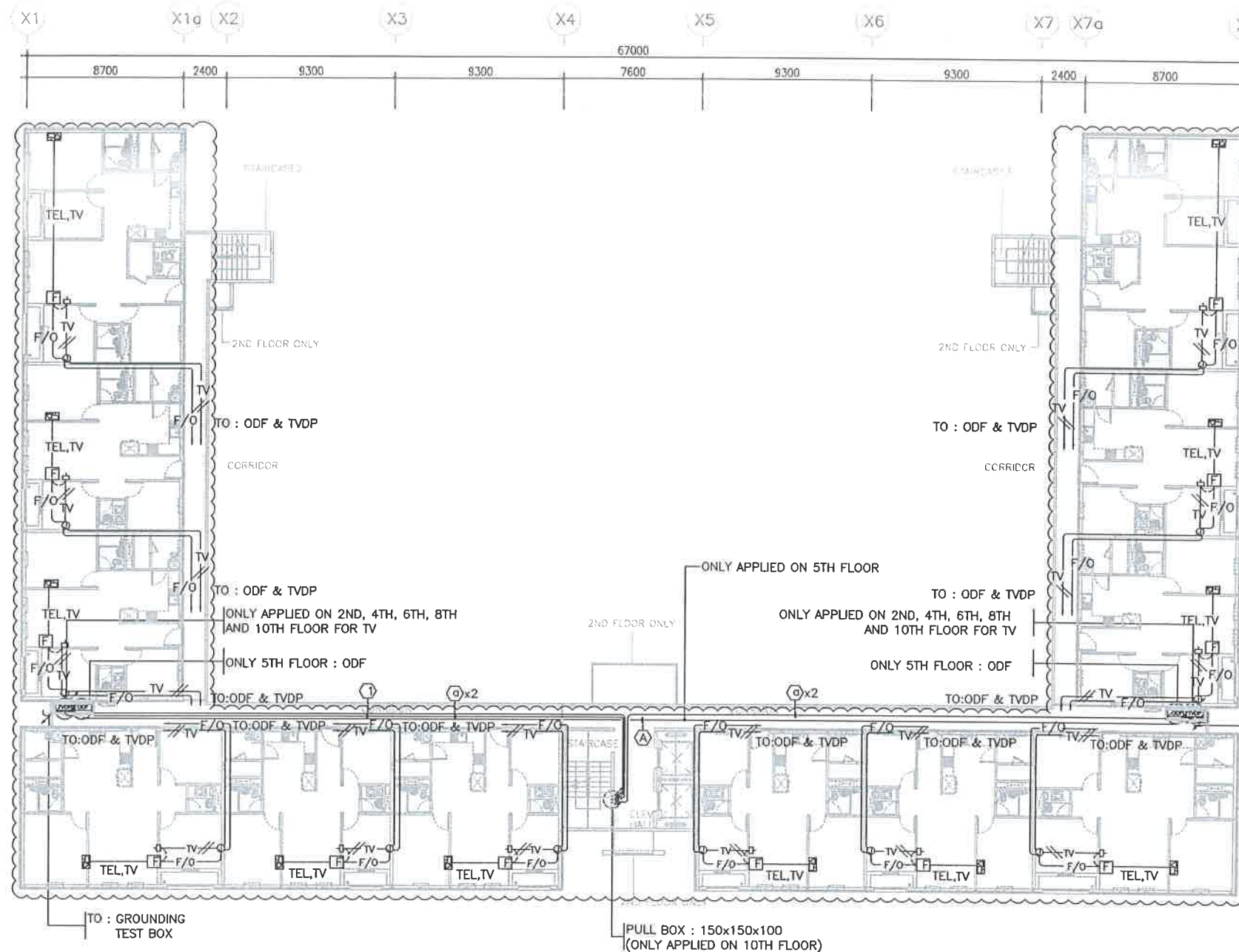
1. 'TYPE L1' MEANS THAT ODF & MOB ARE INSTALLED ON LEFT SIDE IN RESIDENTIAL BUILDING
REFER TO BLOCK PLAN DRAWING (E-1001 : ELECTRICAL POWER SYSTEM PLAN, E-1003 : TELECOMMUNICATION SYSTEM PLAN)

3. (1) THIS MARK IS DELETE DEVICE

CABLE SCHEDULE		
NO.	DESCRIPTION	
(A)	F/O CABLE 4C	(CD 32C)
(1)	F/O CABLE 8C	(ELP 40mm)
(2)	F/O CABLE 8C	(PVC 50C)
(3)	REFER TO BLOCK PLAN DRAWING FOR CABLE SCHEDULE	INT. ~ (1)
(G)	GV 16mm ² X 1	(PVC 25C)
(O)	COAXIAL CABLE x 2	(CD 32C)
(1)	450/750V Cu/PVC 2.5mm ² x 2, E-2.5mm ²	(CD 20C)

CONDUIT AND WIRING FOR TELEPHONE & TV		
TV	COAXIAL CABLE x 1	(CD 25C)
TV	COAXIAL CABLE x 2	(CD 25C)
TEL,TV	UTP CAT5 4P/0.5mm x 1	(CD 25C)
TEL,TV	COAXIAL CABLE x 1	(CD 25C)
TV,F/O	COAXIAL CABLE x 1	(CD 25C)
TV,F/O	F/O CABLE 1C x 1	(CD 25C)
TEL,TV	UTP CAT5 4P/0.5mm x 1	(CD 25C)
TEL,TV	COAXIAL CABLE x 1	(CD 25C)
F/O	F/O CABLE 1C x 1	(CD 25C)

LINE TYPE ACCORDING TO LOCATION OF CONDUIT
----- EXPOSED CONDUIT
----- EMBEDDED IN H/C SLAB, SOLID SLAB, WALL
----- EMBEDDED IN TOPPING CONCRETE
----- UNDERGROUND



2ND~10TH FLOOR COMMON AREA TELEPHONE & TV SYSTEM LAYOUT (TYPE L1)

- ALL BLOCK APPLY EXCLUDE AT A2,A6 AND GROUND FLOOR OF THE A4 BLOCK(MODERN TYPE)

SCALE 1:300

Owner

NATIONAL INVESTMENT COMMISSION
International Zone, Baghdad, Iraq

Investor / Contractor

HANWHA E&C

PROJECT TITLE

BISMAYAH NEW CITY PROJECT
NATIONAL HOUSING PROGRAM

DRAWN BY

CHECKED BY

CHECKED BY

APPROVED BY

DRAWING TITLE

2ND~10TH FLOOR COMMON AREA
TELEPHONE & TV SYSTEM LAYOUT (TYPE L1)

SCALE

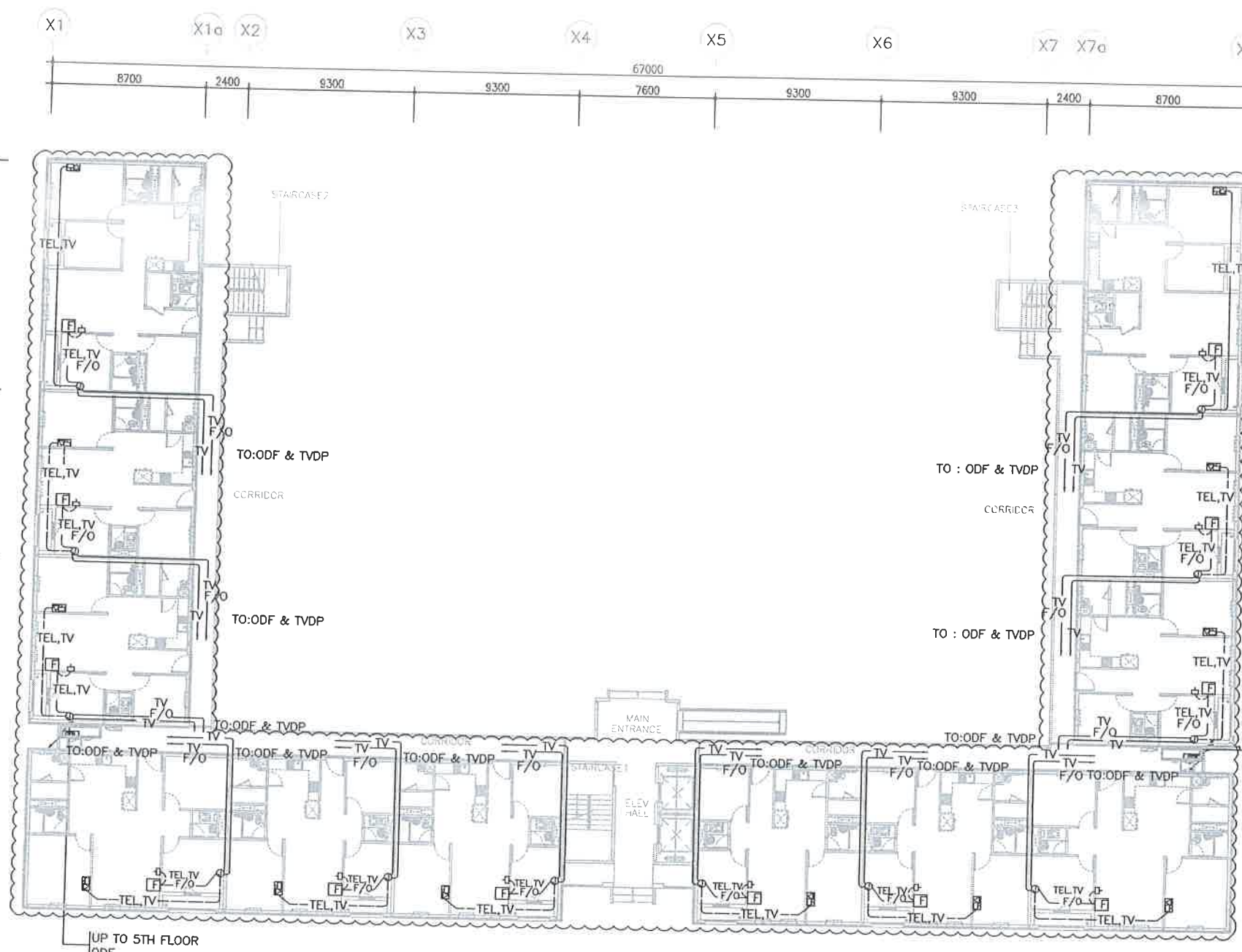
A1 1:150 A3 1:300

DRAWING NO

REV

E - 7109

AFTER



SYMBOL		
SYMBOL	DESCRIPTION	REMARK
ⓧ	TEL (VOICE & DATA) OUTLET	
ⓧ	TEL (VOICE) & TV OUTLET	
ⓧ	TV OUTLET	
ⓧ	MAIN TELEVISION AMP DISTRIBUTION PANEL	
ⓧ	TELEVISION SIGNAL DISTRIBUTION PANEL	
ⓧ	TELEPHONE TERMINAL BOX	
ⓧ	MULTIPLEXER	
ⓧ	PULL BOX	
ⓧ	JUNCTION BOX	
ⓧ	HAND HOLE	
ⓧ	GROUNDING TEST BOX	
ⓧ	EARTH ELECTRODE	
ⓧ	FIBER BOX(WITH PIGTAIL AND RJ11 JACK)	
ⓧ	OPTICAL DISTRIBUTION FRAME	WORK SCOPE BY COMMUNICATION SERVICE

SHOP DRAWING

1. 'TYPE L2' MEANS THAT ODF & SDB ARE INSTALLED ON RIGHT SIDE IN RESIDENTIAL BUILDING
REFER TO BLOCK PLAN DRAWING (E-1001 : ELECTRICAL POWER SYSTEM PLAN, E-1003 : TELECOMMUNICATION SYSTEM PLAN)

3. ① THIS MARK IS DELETE DEVICE

CABLE SCHEDULE		
NO.	DESCRIPTION	
①	F/O CABLE 4C	(CD 32C)
②	F/O CABLE 8C	(ELP 40mm)
③	F/O CABLE 8C	(PVC 500)
④	REFER TO BLOCK PLAN DRAWING FOR CABLE SCHEDULE	INT. ~ 12
⑤	GV 16mm ² X 1	(PVC 25C)
⑥	COAXIAL CABLE x 2	(CD 32C)
⑦	450/750V Cu/PVC 2.5mm ² x 2, E-2.5mm ²	(CD 20C)

CONDUIT AND WIRING FOR TELEPHONE & TV		
TV	COAXIAL CABLE x 1	(CD 25C)
TV	COAXIAL CABLE x 2	(CD 25C)
TEL,TV	UTP CAT5 4P/0.5mm x 1 COAXIAL CABLE x 1	(CD 25C)
TV,F/O	COAXIAL CABLE x 1 F/O CABLE 1C x 1	(CD 25C)
TEL,TV	UTP CAT5 4P/0.5mm x 1 COAXIAL CABLE x 1 F/O CABLE 1C x 1	(CD 25C)
F/O	F/O CABLE 1C x 1	(CD 25C)

LINE TYPE ACCORDING TO LOCATION OF CONDUIT	
---	EXPOSED CONDUIT
---	EMBEDDED IN H/C SLAB, SOLID SLAB, WALL
---	EMBEDDED IN TOPPING CONCRETE
---	UNDERGROUND

1 1ST FLOOR COMMON AREA TELEPHONE & TV SYSTEM LAYOUT (TYPE L2)
SCALE 1:300
- ONLY APPLY AT A2,A6 AND GROUND FLOOR OF THE A4 BLOCK(MODERN TYPE)

Owner NATIONAL INVESTMENT COMMISSION International Zone, Baghdad, Iraq		PROJECT TITLE BISMAYAH NEW CITY PROJECT NATIONAL HOUSING PROGRAM		DRAWING TITLE 1ST FLOOR COMMON AREA TELEPHONE & TV SYSTEM LAYOUT (TYPE L2)	
Investor / Contractor HANWHA E&C		DRAWN BY	CHECKED BY	CHECKED BY	APPROVED BY
		2012	2012	2012	2012
		SCALE A1 1:150 A3 1:300		DRAWING NO E - 7111	
				REV	