


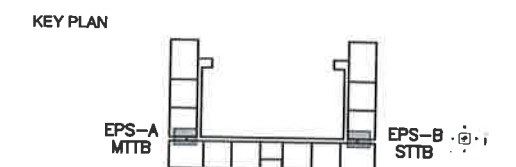
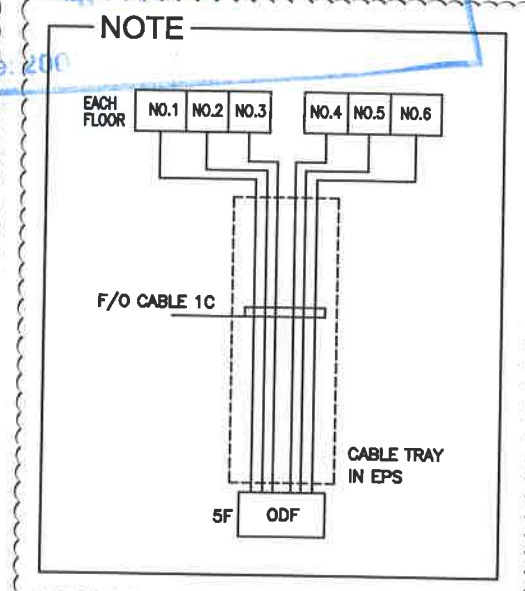
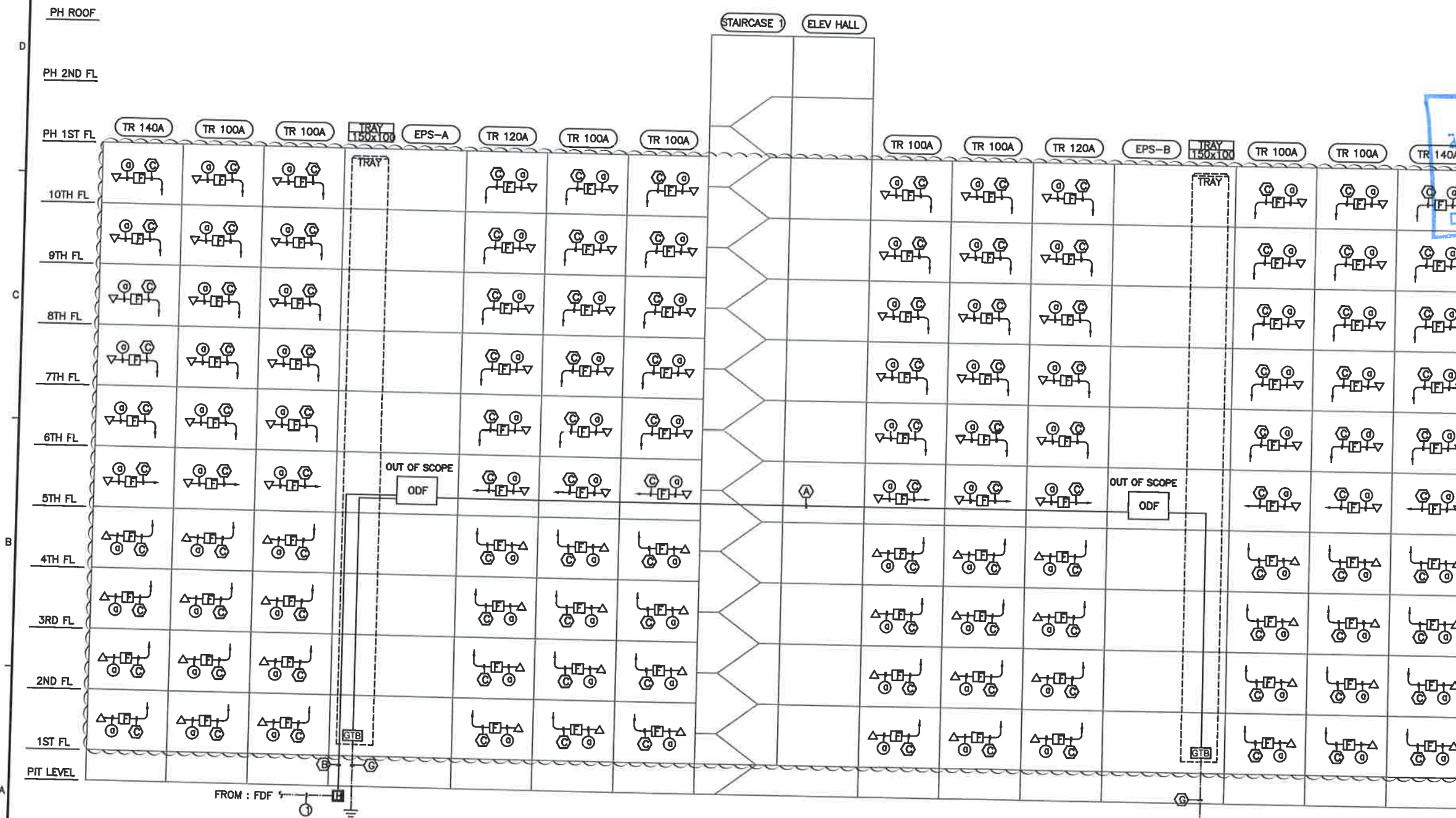
AFTER

SYMBOL		
SYMBOL	DESCRIPTION	REMARK
MTTB	MAIN TELEPHONE TERMINAL BOX	250P
SITB	SUB TELEPHONE TERMINAL BOX	250P
TTB	TELEPHONE TERMINAL BOX	2F (120P) 3~10F (60P)
MUX	MULTIPLXER	
☑	TEL (VOICE & DATA) OUTLET	
▽	TEL (VOICE) OUTLET	
GTB	GROUNDING TEST BOX	
EH	HAND HOLE	
≡	EARTH ELECTRODE	
FB	FIBER BOX(WITH PIGTAIL AND RJ11 JACK)	
ODF	OPTICAL DISTRIBUTION FRAME	WORK SCOPE BY COMMUNICATION SERVICE



CABLE SCHEDULE		
NO.	CABLE SCHEDULE	REMARK
(D)	UTP CAT5 0.5mm/4P x 1 (CD 25C)	VOICE
(B)	UTP CAT5 0.5mm/4P x 2 (CD 25C)	DATA & VOICE
(A)	UTP CAT5 0.5mm/25P (ON TRAY)	
(B)	UTP CAT5 0.5mm/25P x 2 (ON TRAY)	
(A)	F/O CABLE 4C (CD 32C)	
(B)	F/O CABLE 8C (ON TRAY or PUS 50C)	
(C)	F/O CABLE 1C (CD 25C)	DATA & VOICE
(G)	GV 16mm ² x 1 (PVC 25C)	GROUND
(I)	F/O CABLE 8C (ELP 40mm)	

SHOP DRAWING

1. 'TR 100A' MEANS TRADITIONAL TYPE UNIT
2. 'TR 120A' MEANS TRADITIONAL TYPE UNIT
3. 'TR 140A' MEANS TRADITIONAL TYPE UNIT
4. 'TYPE R2 AND L1' MEANS THAT ODF IS INSTALLED ON LEFT SIDE IN RESIDENTIAL BUILDING
REFER TO BLOCK PLAN DRAWING (E-1003 : TELECOMMUNICATION SYSTEM PLAN)
5. '@' UTP CABLE AND COAXIAL CABLE RUN IN ONE CONDUIT
6. THE FIBER BOX F/O CABLE OF THE ALL UNIT ARE TO THE ODF
7. THE ODF IS WORK SCOPE BY TELECOMMUNICATION SERVICE
8.  THIS MARK IS DELETE DEVICE



1 TELEPHONE SYSTEM RISER DIAGRAM (TYPE R2, L1) SCALE NONE

Owner		 NATIONAL INVESTMENT COMMISSION International Zone, Baghdad, Iraq		PROJECT TITLE  BISMAYAH NEW CITY PROJECT NATIONAL HOUSING PROGRAM		DRAWING TITLE TELEPHONE SYSTEM RISER DIAGRAM (TYPE "TR" R2, L1)				
Investor / Contractor		 HANWHA E&C		DRAWN BY	CHECKED BY	CHECKED BY	APPROVED BY	SCALE	DRAWING NO.	REV
				2012 . . .	2012 . . .	2012 . . .	2012 . . .	NONE	E - 7002	

AFTER

SHOP DRAWING

1. "TYPE R1" MEANS THAT ODF & MDB ARE INSTALLED ON RIGHT SIDE IN RESIDENTIAL BUILDING
REFER TO BLOCK PLAN DRAWING (E-1001 : ELECTRICAL POWER SYSTEM PLAN, E-1003 : TELECOMMUNICATION SYSTEM PLAN)

3. (1) THIS MARK IS DELETE DEVICE

SYMBOL	DESCRIPTION
✓	TEL (VOICE & DATA) OUTLET
✓	TEL (VOICE) & TV OUTLET
□	TV OUTLET
[MTP]	MAIN TELEVISION AMP DISTRIBUTION PANEL
[TTP]	TELEVISION SIGNAL DISTRIBUTION PANEL
[MTTB]	MAIN TELEPHONE TERMINAL BOX
[STTB]	SUB TELEPHONE TERMINAL BOX
[TTB]	TELEPHONE TERMINAL BOX
[MUX]	MULTIPLEXER
□	PULL BOX
○	JUNCTION BOX
□	HAND HOLE
[GTB]	GROUNDING TEST BOX
⊥	EARTH ELECTRODE
[F]	FIBER BOX(WITH PIGTAIL AND RJ11 JACK)
[ODF]	OPTICAL DISTRIBUTION FRAME

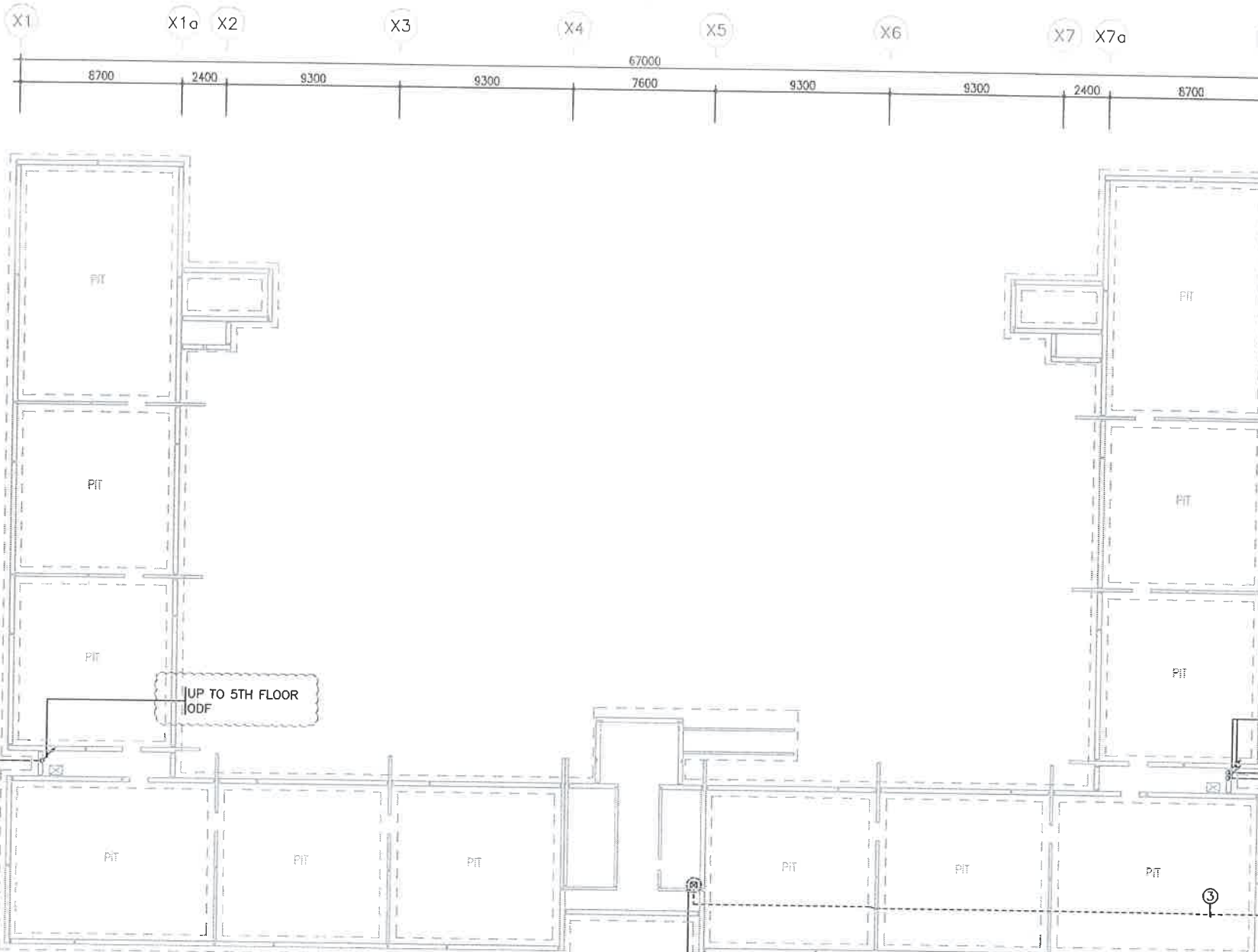
WORK SCOPE BY
COMMUNICATION
SERVICE

NO.	DESCRIPTION
(A)	F/O CABLE 4C (CD 32C)
(1)	F/O CABLE 8C (ELP 40mm)
(2)	F/O CABLE 8C (PVC 50C)
(3)	REFER TO BLOCK PLAN DRAWING FOR CABLE SCHEDULE
(G)	GV 16mm ² X 1 (PVC 25C)
(9)	COAXIAL CABLE x 2 (CD 32C)
(1)	450/750V Cu/PVC 2.5mm ² x 2, E-2.5mm ² (CD 20C)

CONDUIT AND WIRING FOR TELEPHONE & TV

TV	COAXIAL CABLE x 1	(CD 25C)
TV	COAXIAL CABLE x 2	(CD 25C)
TEL,TV	UTP CAT5 4P/0.5mm x 1	(CD 25C)
	COAXIAL CABLE x 1	(CD 25C)
TV,F/O	COAXIAL CABLE x 1	(CD 25C)
	F/O CABLE 1C x 1	(CD 25C)
TEL,TV	UTP CAT5 4P/0.5mm x 1	(CD 25C)
F/O	COAXIAL CABLE x 1	(CD 25C)
	F/O CABLE 1C x 1	(CD 25C)

LINE TYPE	ACCORDING TO LOCATION OF CONDUIT
---	EXPOSED CONDUIT
---	EMBEDDED IN H/C SLAB, SOLID SLAB, WALL
---	EMBEDDED IN TOPPING CONCRETE
---	UNDERGROUND



1 PIT COMMON AREA TELEPHONE & TV SYSTEM LAYOUT (TYPE R1)
- ALL BLOCK APPLY
SCALE 1:300

Owner NATIONAL INVESTMENT COMMISSION International Zone, Baghdad, Iraq	PROJECT TITLE BISMAYAH NEW CITY PROJECT NATIONAL HOUSING PROGRAM	DRAWING TITLE PIT COMMON AREA TELEPHONE & TV SYSTEM LAYOUT (TYPE R1)
Investor / Contractor HANWHA E&C	DRAWN BY 2012	CHECKED BY 2012
	CHECKED BY 2012	APPROVED BY 2012
	SCALE A1 1:150 A3 1:300	DRAWING NO E - 7101
		REV